

TRUE SHOT TRADERS PRESENTS

TRADING MASTERS

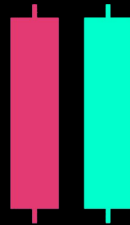
FROM BEGINNER TO ADVANCED



Candlestick Basics



1 Momentum candle
This is your entry candle.
The candle shows strong
momentum in trade direction.



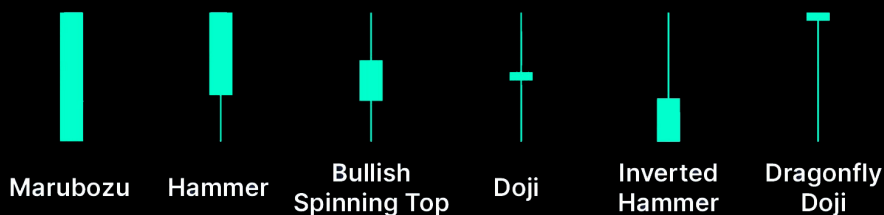
2 Indecision candle
The candle shows weakness.
Bulls and bears equal.
We don't have any clear
direction.



3 Wick rejection candle
Candle fails to break a certain
level. Price is likely to reverse or
continue.



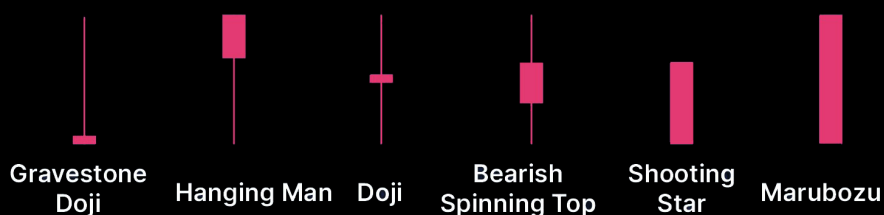
Bullish Momentum



More Bullish

Less Bullish

Bearish Momentum



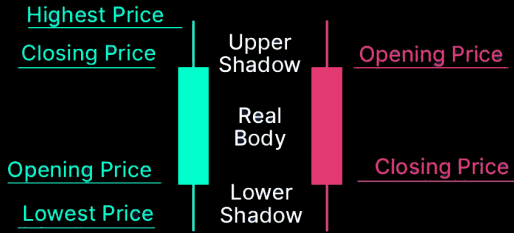
Less Bearish

More Bearish

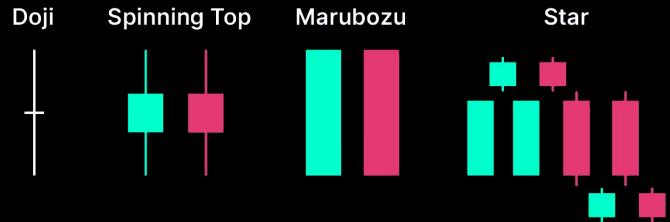
Candlestick Pattern



BASICS



NEUTRAL



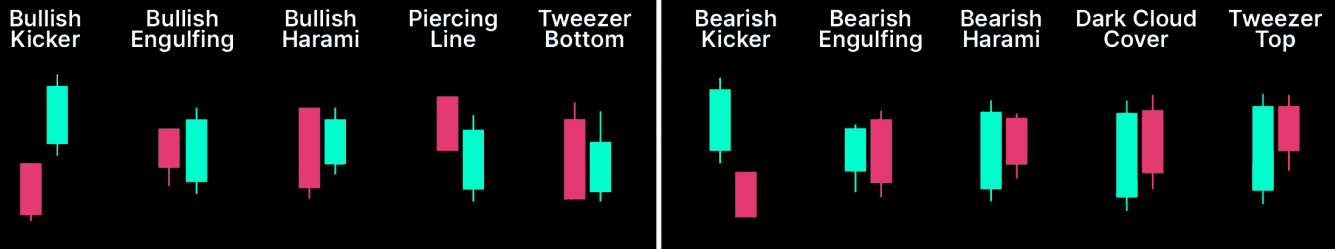
BULLISH

BEARISH

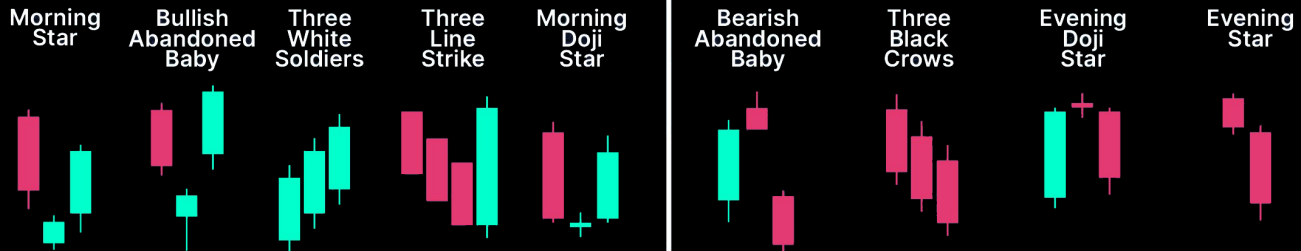
SINGLE CANDLE PATTERNS



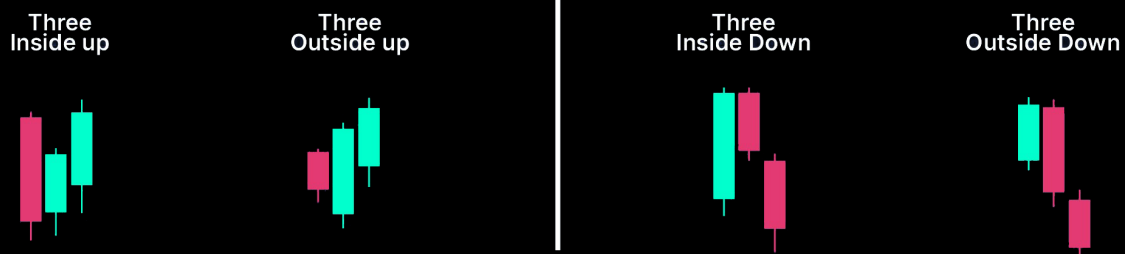
DOUBLE CANDLE PATTERNS



TRIPLE CANDLE PATTERNS



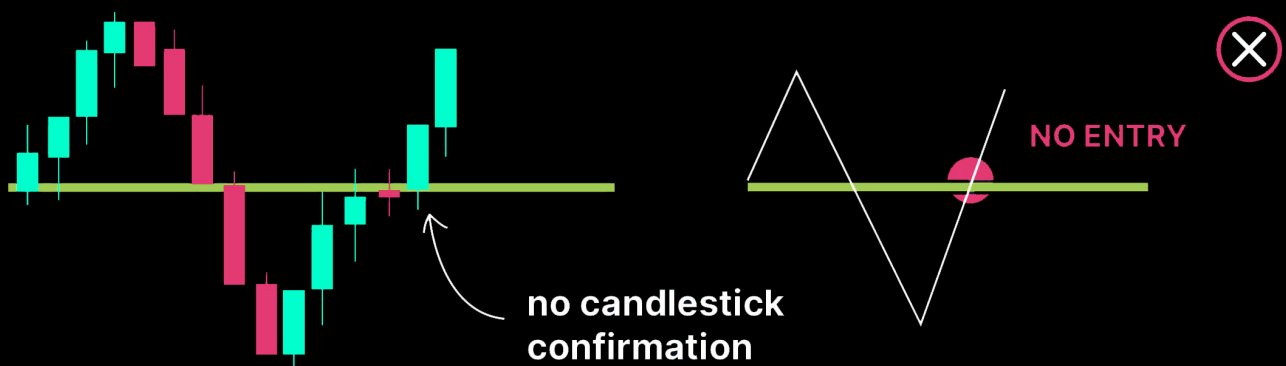
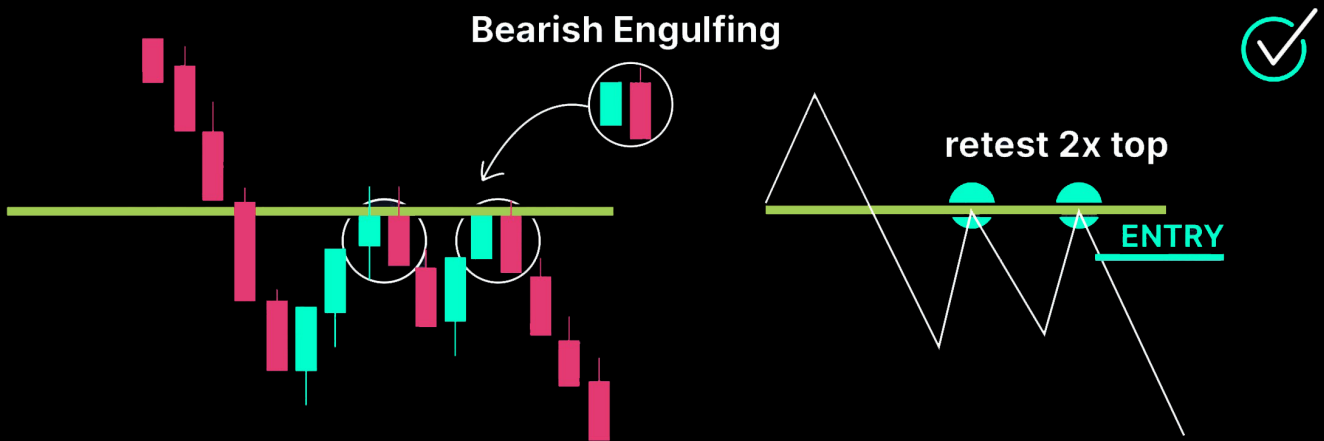
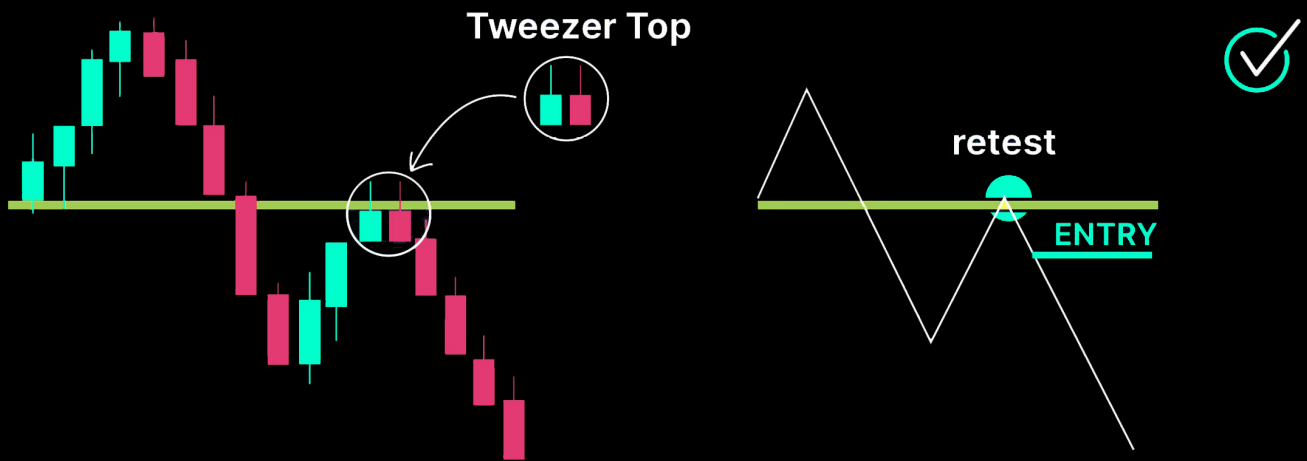
CONFIRMATIONS



Candlestick Confirmation



Always wait for price action to confirm your trade idea. Multiple retests for a strong confirmation.



Divergences



TYPES OF DIVERGENCES

		Bullish Divergence	Bearish Divergence
Strong	Price		
	Oscillator		
Medium	Price		
	Oscillator		
Hidden	Price		
	Oscillator		

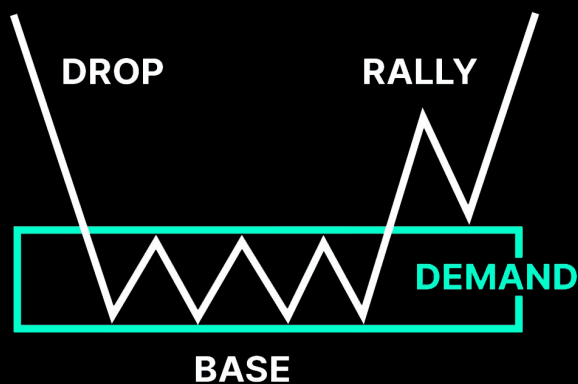
Supply and Demand



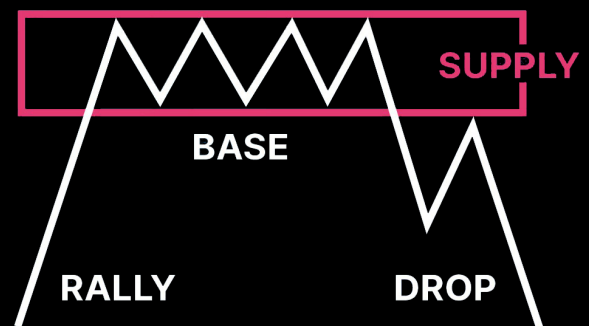
PATTERNS CHEATSHEET

REVERSAL PATTERNS

DROP-BASE-RALLY BULLISH REVERSAL

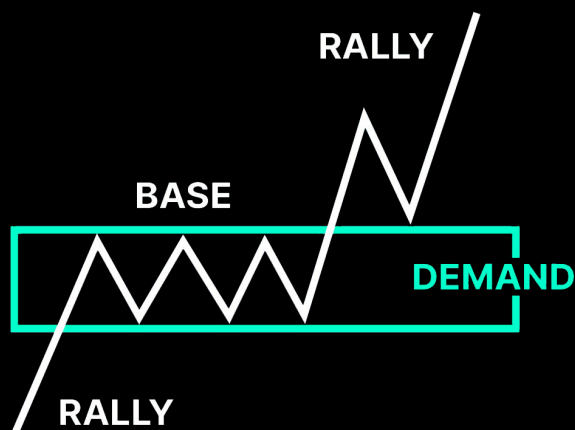


RALLY-BASE-DROP BEARISH REVERSAL



CONTINUATION PATTERNS

RALLY-BASE-RALLY BULLISH REVERSAL



DROP-BASE-DROP BEARISH REVERSAL

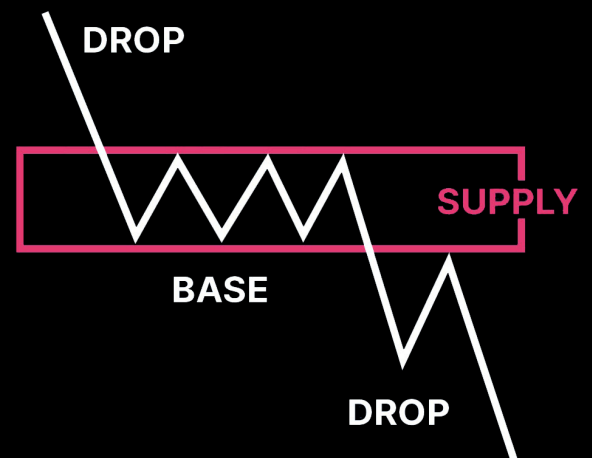
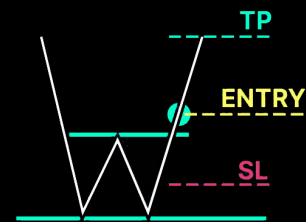


Chart Patterns

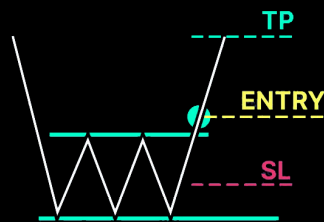


BREAKOUT CHEAT SHEET

REVERSAL



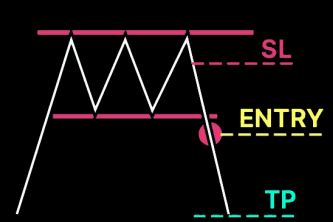
DOUBLE BOTTOM



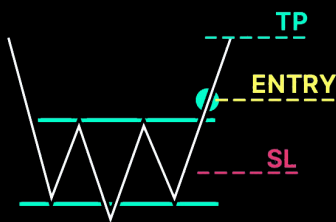
TRIPLE BOTTOM



DOUBLE TOP



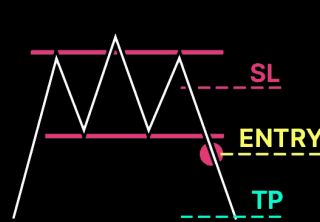
TRIPLE TOP



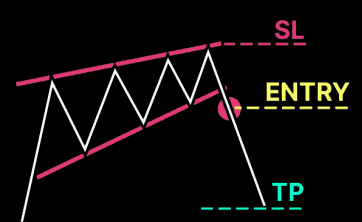
INVERTED HEAD & SHOULDERS



FALLING WEDGE

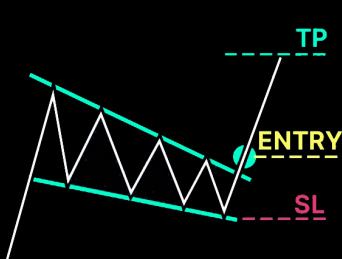


HEAD & SHOULDERS

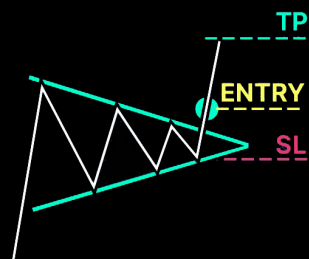


RISING WEDGE

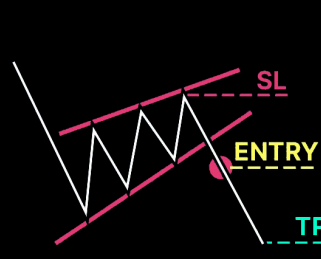
CONTINUATION



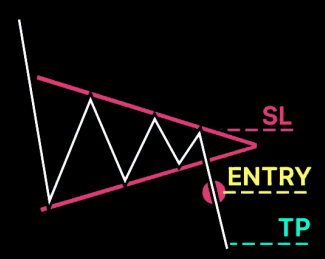
FALLING WEDGE



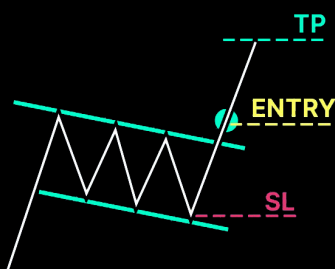
BULLISH PENNANT



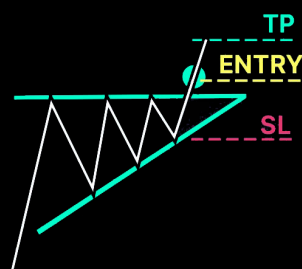
RISING WEDGE



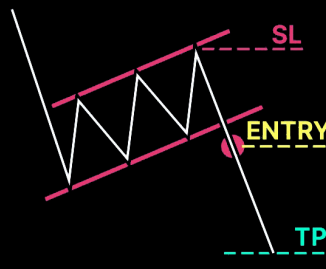
BEARISH PENNANT



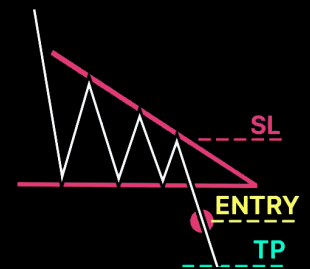
BULLISH FLAG



BULLISH TRIANGLE



BEARISH FLAG



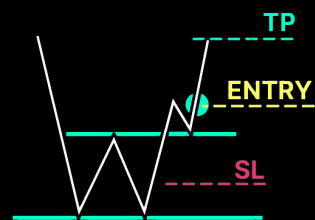
BEARISH TRIANGLE

Chart Patterns

RETEST CHEAT SHEET



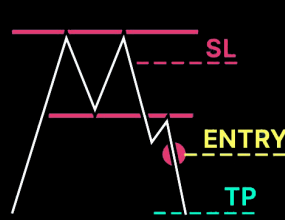
REVERSAL



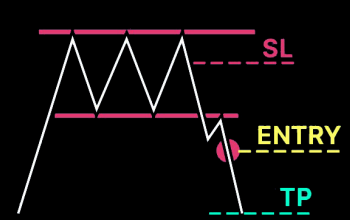
DOUBLE BOTTOM



TRIPLE BOTTOM



DOUBLE TOP



TRIPLE TOP



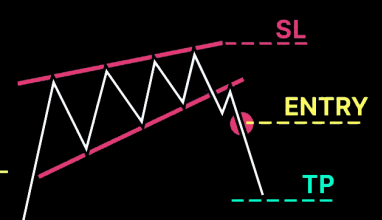
INVERTED HEAD & SHOULDERS



FALLING WEDGE

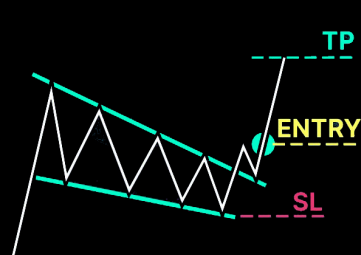


HEAD & SHOULDERS



RISING WEDGE

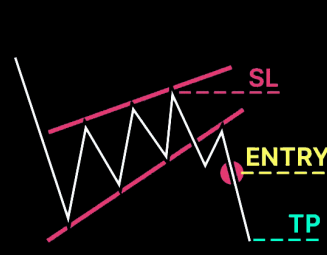
CONTINUATION



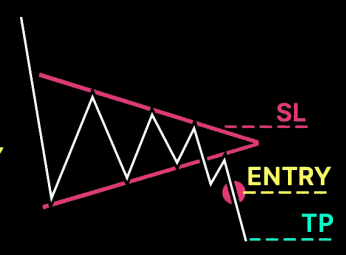
FALLING WEDGE



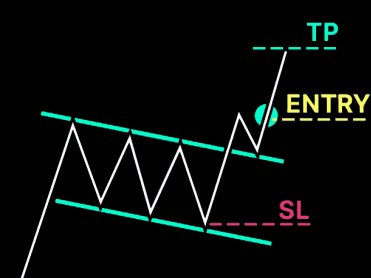
BULLISH PENNANT



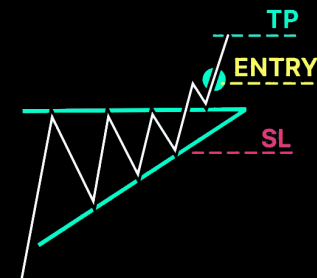
RISING WEDGE



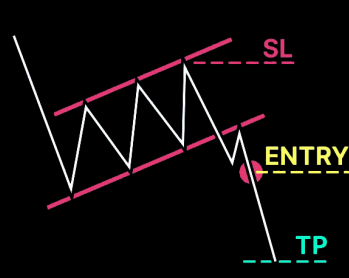
BEARISH PENNANT



BULLISH FLAG



BULLISH TRIANGLE



BEARISH FLAG



BEARISH TRIANGLE

Fibonacci

RETRACEMENTS AND PROJECTIONS



UPTREND FIBONACCI

In an uptrend start drawing from the **swing low** to the **swing high**.

Most popular entry levels are the **0.618** and **0.50** retracement.

Retracements for Entries.
Projections for Exits.



DOWNTREND FIBONACCI

In a downtrend start drawing from the **swing high** to the **swing low**.

Most popular entry levels are the **0.618** and **0.50** retracement.

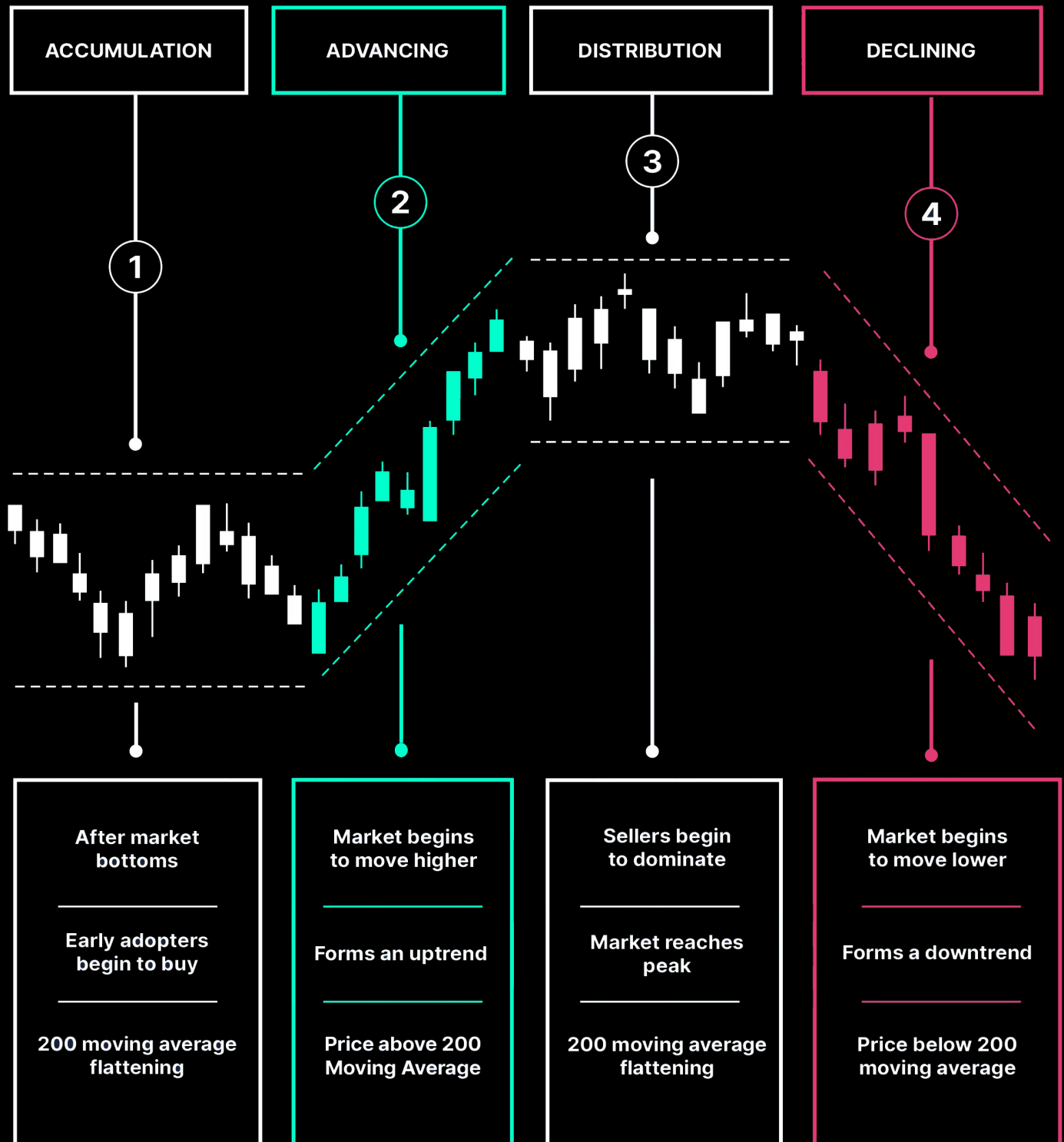
Retracements for Entries.
Projections for Exits.



4 Market Phases



RETRACEMENTS AND PROJECTIONS



Risk Reward Ratio



CALCULATE YOUR TRADE SIZE

Set a **fixed win ratio** for your trades and stick to it. You can be **profitable** even with a negative win rate.

Most traders use a risk reward ratio between **1:5** and **1:2**.

- Don't exit trades too early
- Always set your stoploss
- Trail stoploss when in profits

Risk Reward Ratio	Win Ratio Required For Break Even
1:1	50%
1:2	33%
1:3	25%



Forex Pairs



CORRELATIONS CHEAT SHEET

It's good to know which pairs are likely to move together. **Inversely pairs can be used for hedge positions.**

SAME DIRECTION MOVING PAIRS

▲ EUR / USD

▲ EUR / USD

▲ EUR / USD

▲ USD / CHF

▲ AUD / USD

▲ GBP / USD

▲ AUD / USD

▲ NZD / USD

▲ USD / JPY

▲ NZD / USD

INVERSELY MOVING PAIRS

▲ EUR / USD

▲ GBP / USD

▲ USD / CAD

▲ USD / JPY

▲ GBP / USD

▼ USD / CHF

▼ USD / JPY

▼ AUD / USD

▼ AUD / USD

▼ USD / CHF